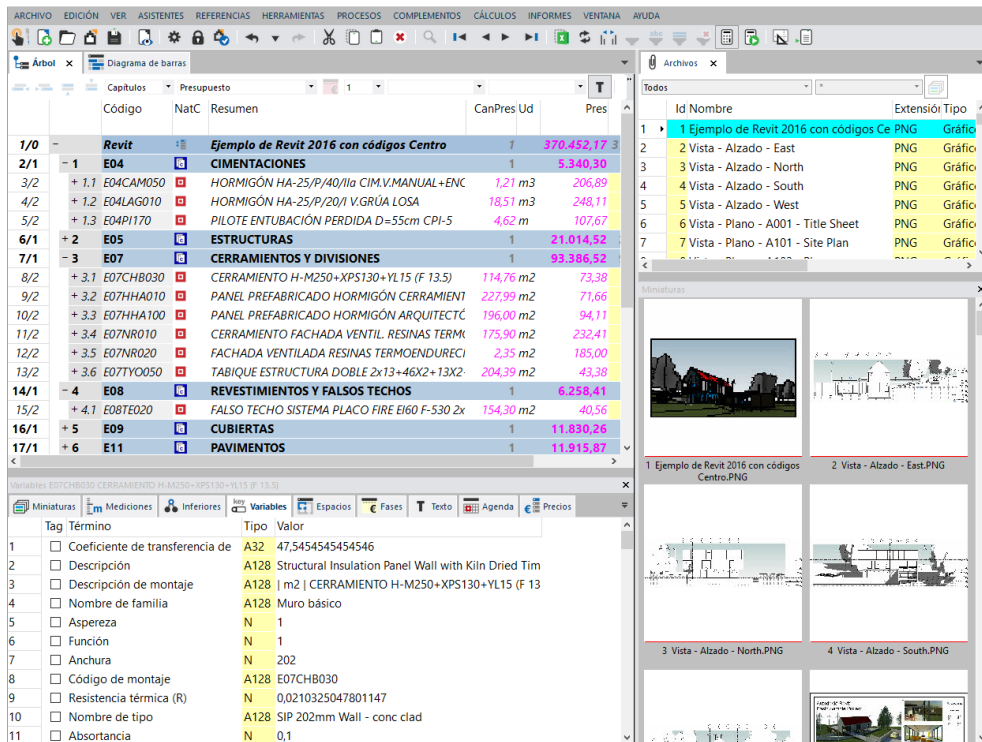


Cost-It: 5D BIM with Presto

Get the full bidding documentation from the Autodesk Revit model

Cost-It automatically extracts the estimate from the Autodesk Revit model including organized work items, take-off lines, parameters and plans.



Código	NatC	Resumen	CanPres	Ud	Pres
1/0		Revit Ejemplo de Revit 2016 con códigos Centro	1		370.452,17
2/1	- 1	E04 CIMENTACIONES	1		5.340,30
3/2	+ 1.1	E04CAM050 HORMIGÓN HA-25/P/40/IIa CIM.V.MANUAL+ENC	1,21	m3	206,89
4/2	+ 1.2	E04LAG010 HORMIGÓN HA-25/P/20/I V.GRÚA LOSA	18,51	m3	248,11
5/2	+ 1.3	E04PI170 PLOTE ENTUBACIÓN PERDIDA D=55cm CPI-5	4,62	m	107,67
6/1	+ 2	E05 ESTRUCTURAS	1		21.014,52
7/1	- 3	E07 CERRAMIENTOS Y DIVISIONES	1		93.386,52
8/2	+ 3.1	E07CHB030 CERRAMIENTO H-M250+XPS130+YL15 (F 13.5)	114,76	m2	73,38
9/2	+ 3.2	E07HHA010 PANEL PREFABRICADO HORMIGÓN CERRAMIENT	227,99	m2	71,66
10/2	+ 3.3	E07HHA100 PANEL PREFABRICADO HORMIGÓN ARQUITECT	196,00	m2	94,11
11/2	+ 3.4	E07NRO10 CERRAMIENTO FACHADA VENTIL. RESINAS TERM	175,90	m2	232,41
12/2	+ 3.5	E07NRO20 FACHADA VENTILADA RESINAS TERMOENDURECI	2,35	m2	185,00
13/2	+ 3.6	E07TYO050 TABIQUE ESTRUCTURA DOBLE 2x13+46X2+13X2	204,39	m2	43,38
14/1	- 4	E08 REVESTIMIENTOS Y FALSOS TECHOS	1		6.258,41
15/2	+ 4.1	E08TE020 FALSO TECHO SISTEMA PLACO FIRE EI60 F-530 2x	154,30	m2	40,56
16/1	+ 5	E09 CUBIERTAS	1		11.830,26
17/1	+ 6	E11 PAVIMENTOS	1		11.915,87

Tag	Término	Tipo	Valor
1	<input type="checkbox"/> Coeficiente de transferencia de	A32	47,5454545454546
2	<input type="checkbox"/> Descripción	A128	Structural Insulation Panel Wall with Kiln Dried Tim
3	<input type="checkbox"/> Descripción de montaje	A128	m2 CERRAMIENTO H-M250+XPS130+YL15 (F 13
4	<input type="checkbox"/> Nombre de familia	A128	Muro básico
5	<input type="checkbox"/> Aspereza	N	1
6	<input type="checkbox"/> Función	N	1
7	<input type="checkbox"/> Anchura	N	202
8	<input type="checkbox"/> Código de montaje	A128	E07CHB030
9	<input type="checkbox"/> Resistencia térmica (R)	N	0,0210325047801147
10	<input type="checkbox"/> Nombre de tipo	A128	SIP 202mm Wall - conc clad
11	<input type="checkbox"/> Absortancia	N	0,1

Presto estimate for a singular housing model with parameters and associated files

From the model to the bid and the estimate

Cost-It generates the bill of quantities and the estimate from the information contained in the BIM model. All data and specifications required to assign unit prices, prepare tender documents and check the project in a single Presto file without delivering the model itself.

WBS categories and types

Each family element from the model is classified by Revit categories in the construction execution order, but you can choose the order or use any international standard system. The thumbnail image is attached to every type for easy identification.

Measurement criteria

Each type is measured in the most suitable unit. If there is several criteria you can select the one for each category.

Elements take-off

Each element in the model has its own take-off line with all the useful information. Quantity, identification and location (Guid, workset, level and phase), geometric dimensions and other useful values (area, volume or perimeter, mark, orientation, XYZ coordinates or date and time of the export). With Presto you can use these values as a reference to measure non-modelled work units like formworks or finishes.

Associated elements and holes

Each element shows associated elements or holes as a take-off lines. These are organized by color depending on their Revit category. Walls: joinery and holes, curtain walls: panels and mullions, stairs: rails and landings...

Espacio	Orientación	Zona	Comentario	N	Longitud	Anchura	Altura	Cantidad	CanPres	Pres
Level 1	Este	Hall 105	Level 1 Hall 105 Wall - Timber Clad		4,70	0,20	2,70	12,69		<input checked="" type="checkbox"/>
Level 1	Oeste		Level 1 Wall - Timber Clad		15,20	0,20	3,90	59,28	71,97	<input checked="" type="checkbox"/>
Level 1		Living 106	Single Window Standard		0,20	1,50	2,70	5,64		<input type="checkbox"/>
Level 1		Living 106	Single Window Standard		0,20	1,50	2,70	5,64		<input type="checkbox"/>
Level 1		Living 106	Single Window Standard		0,20	1,50	2,70	5,64		<input type="checkbox"/>
Level 1		Living 106	Single Window Standard		0,20	1,50	2,70	5,64	0	<input type="checkbox"/>
Ceiling	Sur		Ceiling Wall - Timber Clad		6,20	0,20	0,55	3,30	3,30	<input checked="" type="checkbox"/>
Level 1	Norte	Hall 105	Level 1 Hall 105 Wall - Timber Clad	1	3,20	0,20	2,70	8,64		<input checked="" type="checkbox"/>
Level 1	Oeste	Living 106	Level 1 Living 106 Wall - Timber Clad		4,58	0,20	3,00	6,01		<input checked="" type="checkbox"/>
Level 1	Oeste	Living 106	Huecos no descontados	1	0,55	0,20	1,05	0,58		<input checked="" type="checkbox"/>
Level 1		Kitchen & Dini	M_Double-Flush 1730 x 2134mm		0,20	1,73	2,13	5,24	15,23	<input type="checkbox"/>
Level 2	Este	Entry Hall 201	Level 2 Entry Hall 201 Wall - Timber Clad		4,66	0,20	3,45	16,08	16,08	<input checked="" type="checkbox"/>
Level 1	Norte	Hall 105	Level 1 Hall 105 Wall - Timber Clad		3,04	0,20	2,70	8,21		<input checked="" type="checkbox"/>
Level 1		Bath 103	Single-Flush 800 x 2100		0,20	0,80	2,10	2,97		<input type="checkbox"/>
Level 1	Este		Level 1 Wall - Timber Clad		19,82	0,20	3,90	61,11	69,32	<input checked="" type="checkbox"/>
Level 1		Living 106	Single Window Standard		0,20	1,50	2,70	5,64		<input type="checkbox"/>
Level 1		Living 106	Single Window Standard		0,20	1,50	2,70	5,64		<input type="checkbox"/>
Level 1		Living 106	Single Window Standard		0,20	1,50	2,70	5,64		<input type="checkbox"/>
Level 1		Living 106	Single Window Standard		0,20	1,50	2,70	5,64	0	<input type="checkbox"/>

Linked elements and holes

Change parameters in Presto

Parameter values from any Revit element, material or type can be modified in Presto: from a room's name to physical and geometrical values except "Read only" ones.

Materials and parts

Types may optionally be broken-down of materials, all of them or only those formed by layers (walls, floors, and ceilings).

Net areas and rooms

If areas and rooms are defined in the model, verify built-up and usable areas (including floor surface of doors) in specific chapters. Each room includes its elements take-off lines.

Topography

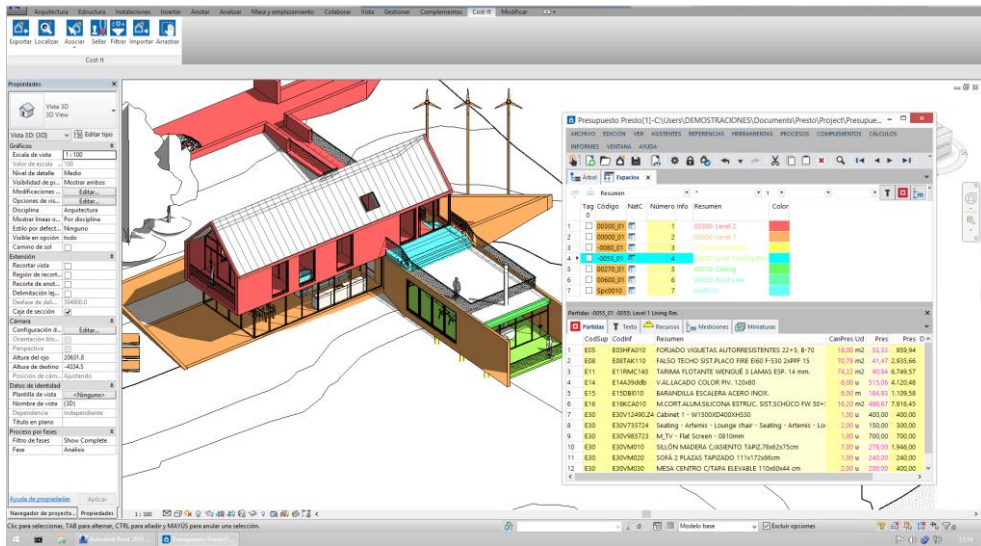
If there is a toposurface in the model, Cost-It generates cuts and fills chapters.

Finishes and paintings

Floor, ceiling, walls and wall base finishes are quantified in Presto as well as paintings.

Spaces, levels, and phases

Get the elements grouped by "Spaces", its cost and resources needed. Each element is linked to its level, zone, and phase if defined in the model.



Color the model from Presto spaces or take-off lines information with one click

Compare design options

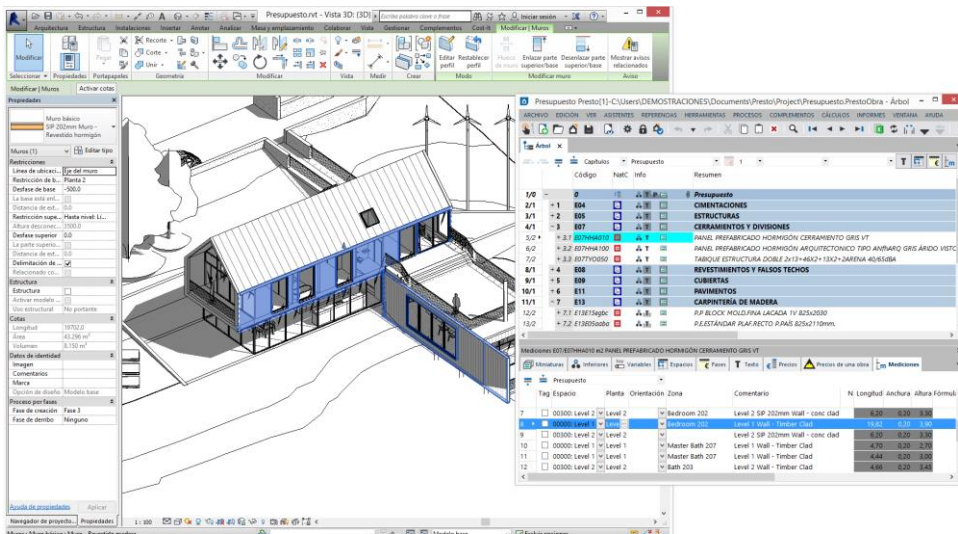
Classify by "Option" and "Variant" in Presto and compare costs for each alternative.

Graphic documentation and IFC

You can optionally attach within the Presto file: views, plans, IFC models and other formats without sharing the model.

Traceability

With both software open, select any take-off lines, work units, chapters or spaces in Presto and visualize them in the model or find Revit elements in the Presto estimate. Another possibility is to assign colors to the model by the estimate information (color by chapter, approval or planning phase, etc.)



Select a take-off line in Presto and find it in Revit automatically

Changes synchronization

If you “Seal” the model you can export what has changed from that moment onwards. You can import any modified information from the estimate to the BIM model.

Bid package

All needed information to evaluate and bid the project is packed in a single Presto file that can be sent to other Presto users, consulted with a free viewer or exported to Excel, Access, Primavera, Project and other formats.

Pricing

If there are unit costs in the BIM model, the resulting bill of quantities will be already priced. If not, types may be associated to work items in external unit price databases or construction product catalogs. The association can be done in Presto or in Revit. This way, actual market prices, specifications, break downs and other associated information will show in the estimate.

Planning and certifying

If you plan the estimate in phases or certify with Presto, you can synchronize this information with the Revit model and visualize it.

General usage instructions

Cost-It and other Presto options can generate the estimate from a Revit model and keep them synchronized with changes throughout the project.

Cost-It 2017 plug-in requires Revit 2017, Revit 2016 or Viewer and Presto 2017 or Presto Demo.

Export: Cost-It creates the Bill of Quantities in Presto including all the information from the model.

Find: Locates any Revit element take-off line in the estimate.

Associate: Assign the work item code from a Presto file to any element in Revit.

Seal: Mark the model and detect any modified element after it.

Filter: Filter useful information for the estimate in Revit.

Import: Enter information in the Revit model from the Presto estimate file.

Drag: Drag the RFA file into Revit from PrestoWeb or a compatible Internet link.

You can find more information or request a demo version at www.rib-software.es